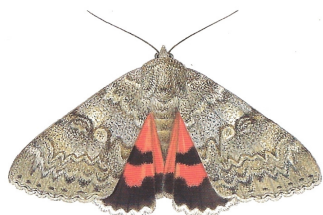


# MOTHS SURVEY

Concise Guide to the  
**Moths**  
of Great Britain and Ireland



Martin Townsend and Paul Waring  
Illustrated by Richard Lewington

British Wildlife Publishing

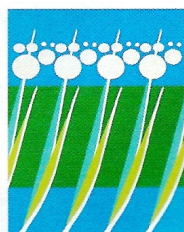
The Friends of Dubwath Silver Meadows Committee would like to thank Peter Macqueen for his help and assistance in the recording, organising and expertise on the two evenings spent at Dubwath Silver Meadows. (Two very wet evenings & mornings!)

***With special thanks to The Pheasant, Bassenthwaite for use of their electric.***

Please note all English & Scientific names used in this report were referenced from the book above.

(any errors or omissions are the committees!)

The two evenings produced 734 moths with a total of 84 species recorded. Data gathered 28/7/2013 & 4/8/2013



© Dubwath Silver Meadows 2013

<b>ENGLISH NAME</b>	<b>SCIENTIFIC NAME</b>
Angle Shades	<i>Phlogophora meticulosa</i>
Antler Moth	<i>Cerapteryx graminis</i>
Barred Chestnut	<i>Diarsia dahlia</i>
Barred Straw	<i>Eulithis pyraliata</i>
Beautiful Golden Y	<i>Autographa pulchrina</i>
Blue Bordered Carpet	<i>Plemyria rubiginata</i>
Bright-line Brown-eye	<i>Lacanobia oleracea</i>
Brimstone Moth	<i>Opisthograptis luteolata</i>
Buff Footman	<i>Eilema depressa</i>
Burnished Brass	<i>Diachrysia chrysitis</i>
Clay	<i>Mythimna ferrago</i>
Common Carpet	<i>Epirrhoe alternata alternata</i>
Common Footman	<i>Eilema lurideola</i>
Common Marbled Carpet	<i>Chloroclysta truncata</i>
Common Rustic	<i>Mesapamea secalis</i>
Dark Arches	<i>Apamea monoglypha</i>
Dark Marbled Carpet	<i>Chloroclysta citrata citrata</i>
Dark Sword-grass	<i>Agrotis ipsilon</i>
Dotted Carpet	<i>Alcis jubata</i>
Dotted Clay	<i>Xestia baja</i>
Double Lobed	<i>Apamea ophiogramma</i>
Double Square-spot	<i>Xestia triangulum</i>
Drinker	<i>Euthrix potatoria</i>
Dun-bar	<i>Cosmia trapezina</i>
Ear Moth	<i>Amphipoea oculea</i>
Early Thorn	<i>Selenia dentaria</i>
Fan-foot	<i>Zanclognatha transipennalis</i>
Flame	<i>Axylia putris</i>
Flame Carpet	<i>Xanthorhoe designata</i>
Flame Shoulder	<i>Ochropleura plecta</i>
Garden Tiger	<i>Arctia caja</i>
Gold Spangle	<i>Autographa bractea</i>
Gold Spot	<i>Plusia festucae</i>
Green Arches	<i>Anaplectoides prasina</i>
Green Carpet	<i>Colostygia pectinataria</i>
Grey Pine Carpet	<i>Thera obeliscata</i>
Ingrailed Clay	<i>Diarsia mendica mendica</i>
Iron Prominent	<i>Notodonta dromedarius</i>
July Highflyer	<i>Hydriomena furcata</i>
Large Ear	<i>Amphipoea lucens</i>
Large Emerald	<i>Geometra papilionaria</i>
Large Yellow Underwing	<i>Noctua pronuba</i>

Least Yellow Underwing	<i>Noctua interjecta caliginosa</i>
Lesser Broad Boarded Yellow U-wing	<i>Noctua janthe</i>
Lesser Swallow Prominent	<i>Pheosia gnoma</i>
Lesser Yellow Underwing	<i>Noctua comes</i>
Light Arches	<i>Apamea lithoxyloae</i>
Light Emerald	<i>Campaea margaritata</i>
Marbled Minor	<i>Oligia strigilis</i>
Middle-barred Minor	<i>Oligia fasciuncula</i>
Mottled Beauty	<i>Alcis repandata repandata</i>
Orange Swift	<i>Hepialus sylvina</i>
Pale-shouldered Brocade	<i>Lacanobia thalassina</i>
Pebble Hook-tip	<i>Drepana falcataria falcataria</i>
Pebble Prominent	<i>Notodonta ziczac</i>
Plain Golden Y	<i>Autographa jota</i>
Purple Clay	<i>Diarsia brunnea</i>
Red Twin-spot Carpet	<i>Xanthorhoe spadicearia</i>
Riband Wave	<i>Idaea aversata</i>
Rosy Minor	<i>Mesoligia literosa</i>
Rosy Rustic	<i>Hydraecia micacea</i>
Ruby Tiger	<i>Phragmatobia fuliginosa fuliginosa</i>
Rustic	<i>Hoplodrina blanda</i>
Scalloped Oak	<i>Crocallis elinguaris</i>
Shaded Broad-bar	<i>Scotopteryx chenopodiata</i>
Silver-ground Carpet	<i>Xanthorhoe montanata montanata</i>
Silver Y	<i>Autographa gamma</i>
Six-striped Rustic	<i>Xestia sexstrigata</i>
Slender Brindle	<i>Apamea scolopacina</i>
Small Angle Shades	<i>Euplexia lucipara</i>
Small Dotted Buff	<i>Photodes minima</i>
Small Fan-footed Wave	<i>Idaea biselata</i>
Small Rivulet	<i>Perizoma alchemillata</i>
Small Square-spot	<i>Diarsia rubi</i>
Smoky Wainscot	<i>Mythimna impura</i>
Snout	<i>Hypena proboscidalis</i>
Square-spot Rustic	<i>Xestia xanthographa</i>
Straw Dot	<i>Rivula sericealis</i>
Swallow-tailed Moth	<i>Ourapteryx sambucaria</i>
Tawny Marbled Minor	<i>Oligia latruncula</i>
Tawny Speckled Pug	<i>Eupithecia icterata</i>
Triple-spotted Clay	<i>Xestia ditrapezium</i>
True Lover's Knot	<i>Lycophotia porphyrea</i>
Twin-spot Carpet	<i>Perizoma didymata didymata</i>

<b>English Name</b>	<b>Count</b>	<b>English Name</b>	<b>Count</b>
Angleshades	1	Small Dotted Buff	1
Antler	3	Small Fan-footed Wave	7
Barred Straw	1	Small Rivulet	1
Blue Bordered Carpet	1	Small Square Spot	1
Bright-line Brown-eye	1	Smoky Wainscot	44
Brimstone	4	Snout	5
Burnished Brass	7	Straw Dot	8
Clay	2	Swallow-tail	1
Common Carpet	4	Tawny Marbled Minor	4
Common Footman	1	Triple-spotted Clay	23
Common Marbled Carpet	2	True Lover's Knot	1
Common Rustic	2	Twin-spot Carpet	1
Dark Arches	3		
Dotted Carpet	1	<b>Total recorded 28th July 2013</b>	<b>238</b>
Dotted Clay	43		
Double Lobed	1		
Double Square Spot	1		
Drinker	3		
Dunbar	2		
Early Thorn	4		
Fan-foot	1		
Flame	1		
Flame Carpet	2		
Flame-shoulder	4		
Garden Tiger	1		
Gold Spot	1		
Green Arches	7		
Green Carpet	9		
Ingrailed Clay	1		
Iron Prominent	1		
July Highflyer	6		
Large Emerald	2		
Larger Yellow Underwing	68		
Lesser Broad Boarded Yellow Underwing	8		
Lesser Swallow Prominent	1		
Light Arches	1		
Light Emerald	2		
Middle-barred Minor	1		
Mottled Beauty	4		
Orange Swift	1		
Pale-shouldered Brocade	1		
Pebble Hook-tip	1		
Plain Golden Y	1		
Purple Clay	4		
Red Twin-spot Carpet	3		
Riband Wave	2		
Rosy Minor	1		
Ruby Tiger	1		
Rustic	1		
Scalloped Oak	2		
Shaded Broad Bar	1		
Silver-ground Carpet	1		
Six Striped Rustic	5		
Slender Brindle	4		
Small Angleshades	1		

<b>English Name</b>	<b>Count</b>	<b>English Name</b>	<b>Count</b>
Antler	12	Straw Dot	8
Barred Chestnut	1	Tawny Marbled Minor	1
Beautiful Golden Y	4	Tawny Speckled Pug	1
Brimstone	1	Triple-spotted Clay	2
Buff Footman	14	Twin-spot Carpet	1
Common Carpet	5		
Common Footman	2	<b>Total recorded 4th August 2013</b>	<b>399</b>
Common Marbled Carpet	1		
Common Rustic	7		
Dark Arches	6		
Dark Marbled Carpet	1		
Dark Sword-grass	2		
Dotted Carpet	1		
Dotted Clay	42		
Double Lobed	1		
Drinker	5		
Dunbar	17		
Ear Moth	1		
Early Thorn	4		
Fan-foot	1		
Flame Carpet	2		
Flame-shoulder	3		
Gold Spangle	1		
Grey Pine Carpet	1		
Green Carpet	1		
Ingrailed Clay	1		
Iron Prominent	2		
July Highflyer	30		
Large Ear	2		
Larger Yellow Underwing	134		
Least Yellow Underwing	1		
Lesser Broad Boarded Yellow Underwing	23		
Lesser Yellow Underwing	1		
Lesser Swallow Prominent	1		
Light Emerald	1		
Marbled Minor	1		
Pebble Hook-tip	1		
Pebble Prominent	1		
Plain Golden Y	1		
Purple Clay	1		
Red Twin-spot Carpet	5		
Riband Wave	1		
Ruby Tiger	2		
Rosy Rustic	2		
Scalloped Oak	1		
Silver Y	2		
Six Striped Rustic	2		
Slender Brindle	4		
Small Dotted Buff	1		
Small Fan-footed Wave	4		
Small Square Spot	1		
Smoky Wainscot	19		
Snout	3		
Square-spot Rustic	2		